

The background is a dark blue technical drawing or blueprint. It features various geometric shapes, including large circles, smaller concentric circles, and lines with arrows indicating directions or measurements. Some parts of the drawing are highlighted in a lighter blue color. The overall aesthetic is that of a precision engineering or scientific diagram.

Robert Lupton
LSST Pipeline Scientist

Data Quality Analysis and Revalidating the Pipelines

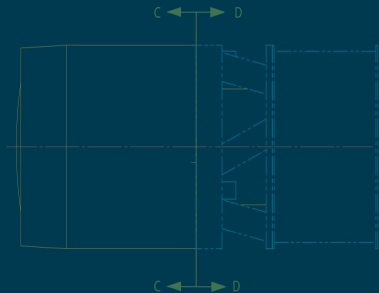
2017-01-25

LSST2016 PROJECT AND COMMUNITY
WORKSHOP

AUGUST 15-19, 2016 | TUCSON, ARIZONA

LSST DM construction has two tasks:

- build the pipelines
- Commission the pipelines with the real telescope and camera



LSST DM construction has two tasks:

- build the pipelines
- Commission the pipelines with the real telescope and camera

Fortunately *validating* and *commissioning* are very similar tasks.

