

The background is a dark blue technical drawing or blueprint. It features various geometric shapes, including circles, arcs, and lines, some of which are highlighted in a lighter blue. There are also some text labels like 'L', 'E', and 'Y' scattered throughout the drawing. The overall style is that of a precision engineering or scientific diagram.

Robert Lupton  
LSST Pipeline Scientist

# Data Quality Analysis and Revalidating the Pipelines

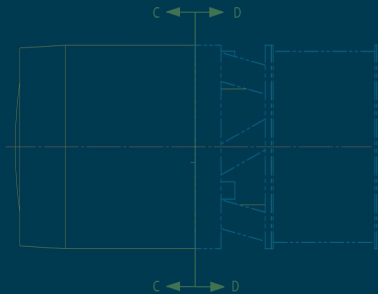
2017-01-25

**LSST2016** PROJECT AND COMMUNITY  
**WORKSHOP**

AUGUST 15-19, 2016 | TUCSON, ARIZONA

LSST DM construction has two tasks:

- build the pipelines
- Commission the pipelines with the real telescope and camera



LSST DM construction has two tasks:

- build the pipelines
- Commission the pipelines with the real telescope and camera

Fortunately *validating* and *commissioning* are very similar tasks.

