

The background is a dark blue technical drawing. On the left is a large circular diagram with concentric circles and radial lines, resembling a camera's field of view or a sensor array. In the center is a smaller diagram of a lens or optical element with horizontal and vertical axes. On the right is a detailed mechanical drawing of a telescope or camera structure. Various lines, circles, and text labels like 'L', 'E', and 'V' are scattered throughout the drawing.

Robert Lupton
LSST Pipeline Scientist

Data Quality Analysis and Revalidating the Pipelines

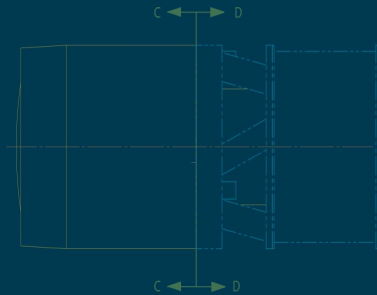
2017-01-25

LSST2016 PROJECT AND COMMUNITY
WORKSHOP

AUGUST 15-19, 2016 | TUCSON, ARIZONA

LSST DM construction has two tasks:

- build the pipelines
- Commission the pipelines with the real telescope and camera



LSST DM construction has two tasks:

- build the pipelines
- Commission the pipelines with the real telescope and camera

Fortunately *validating* and *commissioning* are very similar tasks.

