

The background is a dark blue technical drawing or blueprint. It features various geometric shapes, including circles, arcs, and lines, some of which are dashed. There are also some alphanumeric labels like 'L', 'E', and 'Y' with arrows pointing to specific parts of the drawing. The overall style is that of a precision engineering or scientific diagram.

Robert Lupton  
LSST Pipeline Scientist

# Data Quality Analysis and Revalidating the Pipelines

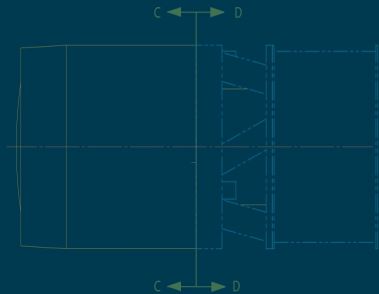
2017-01-25

**LSST2016** PROJECT AND COMMUNITY  
**WORKSHOP**

AUGUST 15-19, 2016 | TUCSON, ARIZONA

LSST DM construction has two tasks:

- build the pipelines
- Commission the pipelines with the real telescope and camera



LSST DM construction has two tasks:

- build the pipelines
- Commission the pipelines with the real telescope and camera

Fortunately *validating* and *commissioning* are very similar tasks.

